

THERMATITE



by

Richards-Wilcox

Engineered For Life



T150-MR & T150

Overhead Sectional Insulated Steel Door

- Fabricated from pre-painted, hot dipped stucco embossed galvanized steel.



- Insulated with 1.5" of Neufoam™ polyurethane insulation. CFC and HCFC free.



- Sections feature Weatherlock™ thermal break and ship lap section joint.



Multi-Ribbed

Unique Multi-Ribbed (MR) Profile

- Multi-Ribbed profile complements contemporary architecture.
- Perfect choice when aesthetics are a key consideration.
- Non-repeating stucco surface texture resists scratches and dirt.



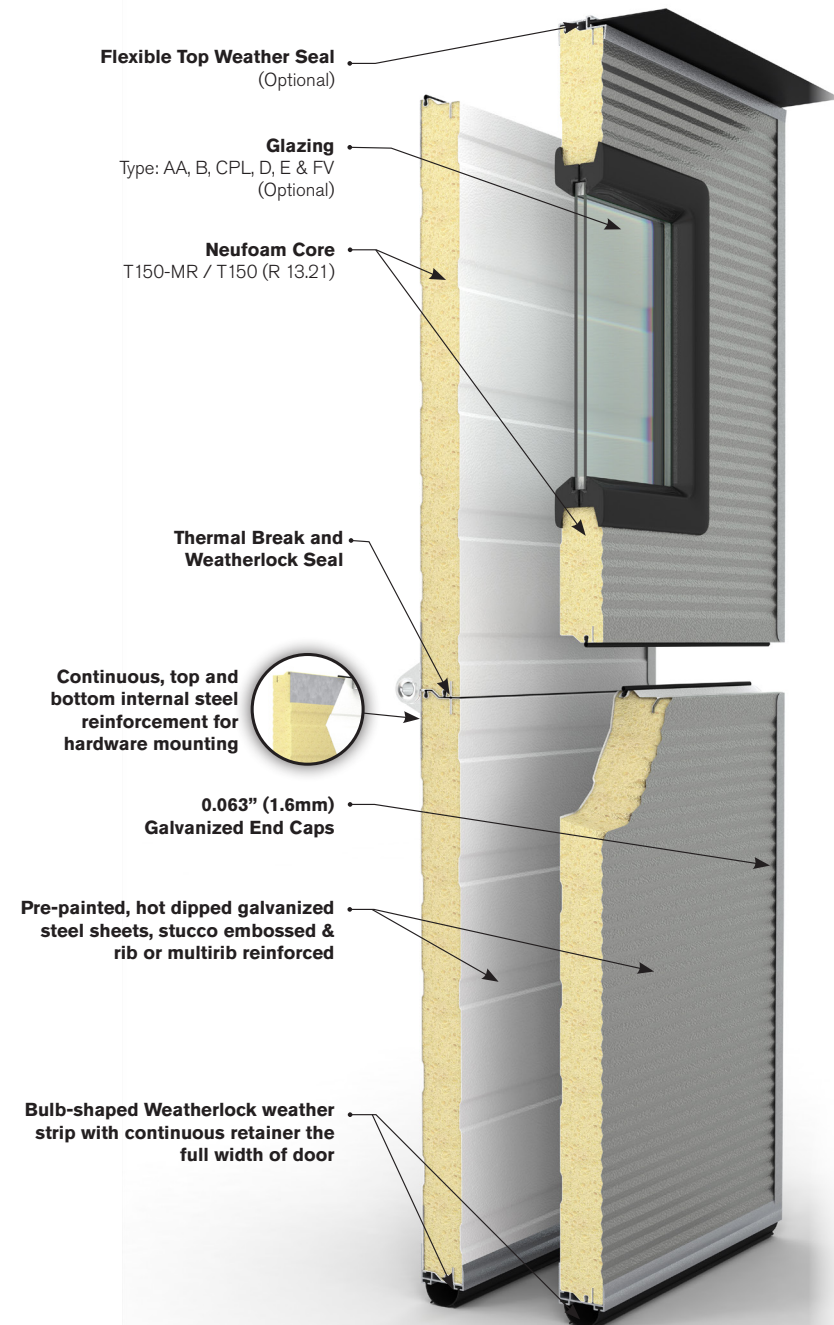
Ribbed

Ribbed Profile

- Recognized as a standard look on many door systems that are already installed.
- RW can provide matching section replacement options to customers quickly and efficiently.



PRODUCT SPECIFICATIONS



SECTION SCHEDULE

DOOR OPENING HEIGHT	Sections High	DOOR OPENING WIDTH	Max no. of Windows
7'-1" to 8'-1" (2159mm to 2464mm)	4	8'-0" to 9'-2" (2438mm to 2794mm)	2
8'-2" to 10'-1" (2489mm to 3073mm)	5	9'-3" to 12'-2" (2819mm to 3708mm)	3
10'-2" to 12'-1" (3099mm to 3683mm)	6	12'-3" to 16'-2" (3734mm to 4928mm)	4
12'-2" to 14'-1" (3708mm to 4293mm)	7	16'-3" to 19'-2" (4953mm to 5842mm)	5
14'-2" to 16'-1" (4318mm to 4902mm)	8	19'-3" to 24'-2" (5867mm to 7366mm)	6
16'-2" to 18'-1" (4928mm to 5512mm)	9	24'-3" to 28'-2" (7391mm to 8585mm)	7

SECTION DETAILS

SECTION THICKNESS 1 1/2" (38mm)

THERMAL VALUE OF SECTIONS*
R 13.21 ft² hF/Btu

FACE SHEET PROFILE Multi-Ribbed / Ribbed

FACE SHEET THICKNESS 0.016" (0.41mm)

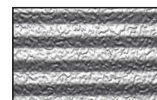
MAXIMUM OPENING WIDTH** 29'-4" (8941mm)

MAXIMUM OPENING HEIGHT 22' (6706mm)

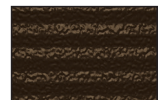
FINISH Two coat, baked-on paint system on exterior side, primer and polyester finish coat.



White

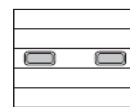


Silver

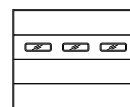


Brown

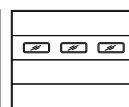
GLAZING OPTIONS



Type AA (26"x 13")



Type B (24"x 6")



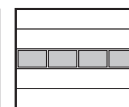
Type CPL (24"x 8")



Type D (34"x 16")



Type E (24"x 12")



Fullview

WARRANTY

10 years against delamination of the panels
1 year on materials and workmanship

*Thermal Values Calculated. **For larger sizes, please consult factory.

Professionally installed and serviced by: